

Be Inspired

Kiru Nyayo Classic

The Essence of a Timeless Safari

This is where a journey begins — a safari designed to be remembered for a lifetime. An experience created for you, whether as a couple, with friends, or as a family. A trip to share unforgettable moments that never repeat.

Tanzania welcomes you with its wild landscapes, endless skies, and the freedom that comes from reconnecting with what truly matters.

Every encounter with wildlife and local culture brings you closer to the true meaning of Nyayo: moving with respect, awareness, and leaving a meaningful footprint in every moment.

Travel at your own pace and let each sunrise and shared experience remind you that the best memories are made together.

Your Safari. Your Nyayo.

Mary Kimai



Kiru Safari Experience
+34 681 802 190
info@kirusafariexperience.com

Tour Type
Private Tour

Tour Length
7 Days / 6 Nights

Version Number
#2024-0015.6

Travelers
2x Adulto

Summary

Kiru Nyayo Classic



Day by Day

See your full itinerary on [Page 6-18](#)

Day 1 Arusha

Accommodation: Pazuri Inn

Meal Plan: Breakfast & Dinner
Drinking water

Day 2 Tarangire National Park

Accommodation: Eileen's Trees Inn

Meal Plan: Breakfast, Lunch & Dinner

Day 3 Serengeti National Park

Accommodation: Kon Tiki Serengeti Camp

Meal Plan: Breakfast, Lunch & Dinner

Day 4 Central Serengeti National Park

Accommodation: Kon Tiki Serengeti Camp

Meal Plan: Breakfast, Lunch & Dinner

Day 5 Southern Serengeti National Park

Accommodation: Embalakai Ngorongoro Camp

Meal Plan: Breakfast, Lunch & Dinner

Highlights

- Serengeti National Park
- Ngorongoro Crater
- Tarangire National Park

Summary

Day by Day

Continued from previous page

Day 6

Arusha

Accommodation: Pazuri Inn

Meal Plan: Breakfast, Lunch & Dinner

Day 7

Kilimanjaro Airport

Accommodation: No accommodation

Meal Plan: Breakfast

Our vehicles



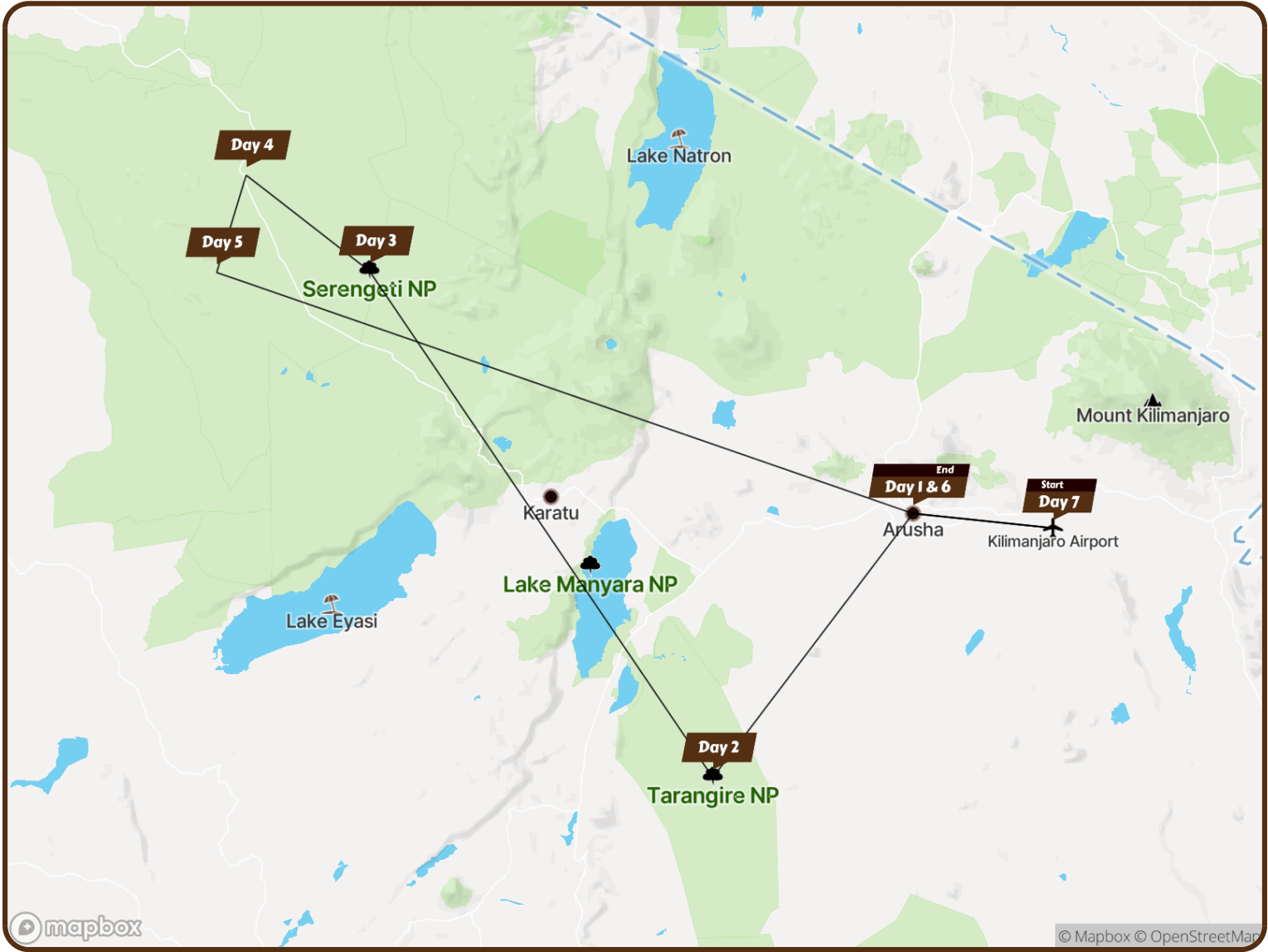
Toyota Landcruiser - Open-sided

Toyota Landcruiser - Open-sided

Our 4x4 safari vehicles include:

- Comfortable and safe 4x4 vehicles designed to provide maximum comfort and safety throughout the expedition.
- Bilingual professional guide offering detailed explanations about local wildlife, flora, and culture.
- Pop-up roof for unrestricted wildlife viewing and photography from any angle.
- Power sockets to charge your devices during the journey.
- Binoculars available to observe wildlife from a distance and ensure you don't miss any details.
- Communication radio to maintain constant contact between vehicles and park guides.
- Bottled water available throughout the safari to keep you hydrated.
- Spacious and comfortable seats with ample legroom, plus cushions or blankets for early mornings or cooler temperatures.
- Portable cooler to keep refreshments and snacks fresh during the safari.

Explore the route



Start Point Kilimanjaro Airport

Day *Destination & Accommodation*

- Day 1 **Arusha** Pazuri Inn
- Day 2 **Tarangire NP** Eileen's Trees Inn
- Day 3 **Serengeti NP** Kon Tiki Serengeti Camp
- Day 4 **Central Serengeti NP** Kon Tiki Serengeti Camp
- Day 5 **Southern Serengeti NP** Embalakai Ngorongoro Camp
- Day 6 **Arusha** Pazuri Inn
- Day 7 **Kilimanjaro Airport** (No accommodation)

End Point Arusha



Day 1

Arusha - Arrival in Tanzania

Accommodation
Pazuri Inn

Upon your arrival, a member of the Kiru Safari Experience team will warmly welcome you and accompany you to your accommodation in Arusha.

Once at the hotel, you can settle in comfortably and enjoy the rest of the day at leisure. This first day is designed to help you recover from your journey and begin connecting with the essence of Tanzania.

It is the perfect moment to adapt to your surroundings, relax with your travel companions, and prepare for the wildlife, adventure, and unforgettable experiences that begin the following day.

Note: The program will be adjusted according to your final flight schedule.

Activity Day 1

- You will be transferred from the airport in **Kilimanjaro Airport**.

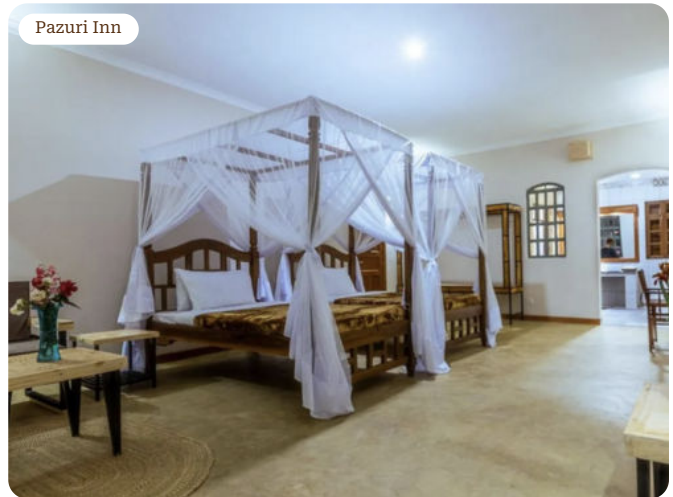
Meal Plan – Day 1

- Breakfast & Dinner
- Drinking water

Day 1

Accommodation Pazuri Inn

Hotel





Day 2

Tarangire National Park

Accommodation
Eileen's Trees Inn

Tarangire National Park, located just a few hours by road from Arusha, covers an area of 2,850 km² of rolling hills and savannah landscapes dotted with ancient termite mounds.

Renowned for its majestic baobabs and large elephant herds, it hosts the largest elephant population in East Africa. The Tarangire River flows through the park, forming the lifeline of this wild and diverse ecosystem.

At the heart of the park, the Silale Swamp becomes a vital water source during the dry season, attracting elephants and predators alike. Tarangire also supports a strong lion population, and it is common to spot other big cats tracking herbivores or resting among the branches of the iconic sausage trees.

Safaris in Tarangire allow you to observe wildlife at a relaxed pace and fully connect with nature. Its open landscapes and peaceful atmosphere provide an unforgettable first encounter with Tanzania's wildlife.

Activities *Day 2*

8:00

- Someone from our safari team will come and pick you up at your hotel.
- Transfer by Road, **Arusha to Tarangire National Park**
- Explore fantastic **Tarangire** on a guided game drive that will take you out among the baobab trees to look for lions, elephants and more.
- Transfer by Road, **Tarangire National Park via Karatu to Eileen's Trees Inn**

Meal Plan – Day 2

- Breakfast, Lunch & Dinner

Day 2

Accommodation **Eileen's Trees Inn**

Lodge

Inn Exterior



Eileen's Trees Inn



Eileen's Trees Inn



Eileen's Trees Inn





Day 3

Serengeti National Park

Accommodation

Kon Tiki Serengeti Camp

After breakfast, you will begin your journey towards **Serengeti National Park**, crossing the spectacular Ngorongoro Conservation Area and entering the park through **Naabi Gate**, its main entrance.

The drive takes you through mountainous landscapes, lush forests, and gentle volcanic hills that gradually open into the vast plains of the Serengeti — an endless sea of golden grass and scattered acacia trees where wildlife moves freely without boundaries.

Along the way, you will enjoy an afternoon game drive, experiencing your first encounters with Serengeti's wildlife as you head towards your accommodation, located in the heart of the park.

This day combines the excitement of your first glimpse of the Serengeti with the peace and beauty of one of Africa's most iconic natural landscapes.

Activities Day 3

Morning

- Transfer Game Drive, **Karatu** via **Ngorongoro Conservation Area** to **Serengeti National Park**

Medio dia

- Enjoy the beautiful scenery and all the incredible wildlife possibilities on a guided game drive through the Central Serengeti.

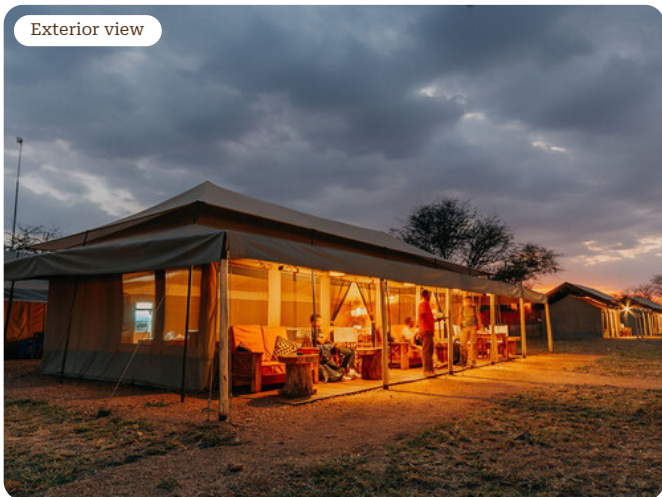
Meal Plan – Day 3

- Breakfast, Lunch & Dinner

Day 3

Accommodation **Kon Tiki Serengeti Camp**

Tented camp





Day 4

Serengeti Central – Wildlife Immersion

Accommodation

Kon Tiki Serengeti Camp

Inside

Central Serengeti National Park

When people dream about the Serengeti, they usually imagine Serengeti Central – the heart of the park and the best place to experience its true essence.

Wildlife is abundant here, with large animal populations roaming freely across the plains. Surrounded by acacia trees and endless horizons, this iconic landscape immerses you in the spirit of Africa.

Today you will enjoy a full-day safari exploring the vast plains and observing wildlife in its natural habitat. Expect to see herds of zebras and wildebeest moving across the golden grasslands, lions resting under the trees, and elephants and giraffes roaming gracefully through the landscape.

This day is designed to experience the Serengeti at a relaxed pace, fully connecting with nature. After an unforgettable day, you will return to your accommodation in Serengeti Central to rest and enjoy the peaceful atmosphere as the sun sets.

A true immersion into the majesty of the Serengeti, creating lasting memories of your safari.

Activity Day 4

All Day

- You'll be joining us in **Central Serengeti National Park** for a guided game drive. It's a fantastic opportunity to see some of the animals you came so far to see.

Meal Plan – Day 4

- Breakfast, Lunch & Dinner

Day 4

Accommodation **Kon Tiki Serengeti Camp**

Tented camp Inside Central Serengeti National Park

Exterior view



Room Interior





Day 5

Serengeti South & Journey Towards Ngorongoro

Accommodation

Embalakai Ngorongoro Camp

After an unforgettable morning in Serengeti Central, you will set off towards the southern part of the park, approaching the Ngorongoro Conservation Area, which you will explore in depth the following day.

The crater, formed over two million years ago, is an impressive caldera with walls over 600 metres high. Its rich wildlife includes the endangered black rhinoceros, lions, elephants, zebras, and giraffes. The 4x4 descent along its slopes is an adventure in itself.

Known as the “Cradle of Humankind,” this region blends nature and history, offering a truly unique and memorable experience.

After the day’s journey, you will arrive at your accommodation in Serengeti South to relax and enjoy the peaceful surroundings of this special area.

Activity Day 5

Después del safari en Globo

- Our transfer game drive means that you can look at wildlife even as we take you to your next destination.

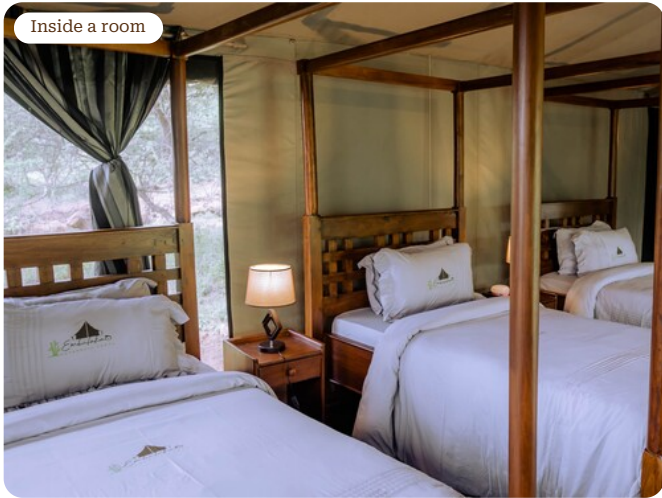
Meal Plan – Day 5

- Breakfast, Lunch & Dinner

Day 5

Accommodation **Embalakai Ngorongoro Camp**

Tented camp





Day 6

Descent into Ngorongoro Crater

Accommodation
Pazuri Inn

Today you will experience one of the most anticipated moments of the itinerary: the descent into the Ngorongoro Crater.

At sunrise, the crater is often covered in mist, creating a magical and majestic atmosphere. For this reason, it is highly recommended to begin the descent early to make the most of this unique experience.

Inside, five distinct ecosystems coexist — forest, savannah, swamps, saline lakes, and arid land — creating extraordinary biodiversity that makes the crater a true “Garden of Eden”, where wildlife and plant species thrive in a setting unlike anywhere else on Earth.

After exploring this remarkable landscape and witnessing wildlife at its best, you will return to Arusha for your overnight stay, closing a day filled with unforgettable emotions and memories.

Activities Day 6

Morning

- Ngorongoro Crater Descent, **Ngorongoro Crater**

Afternoon

- This afternoon we'll be taking you to the next stage of your safari, but you'll also get to enjoy one last game drive along the way.

Meal Plan – Day 6

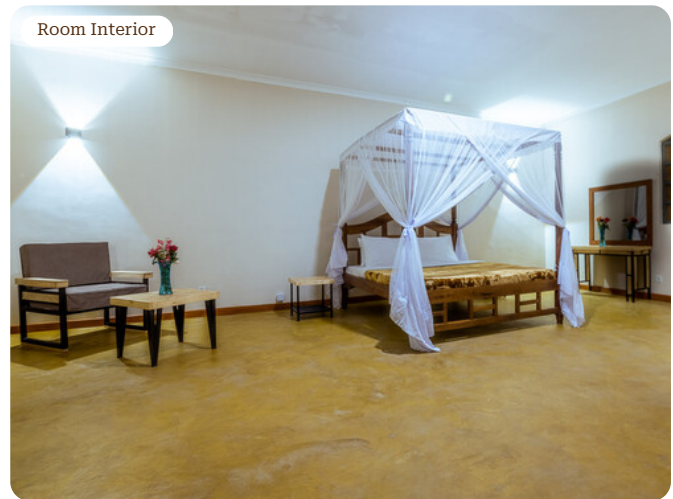
- Breakfast, Lunch & Dinner

Day 6

Accommodation **Pazuri Inn**

Hotel

Come back and stay again at Pazuri Inn.





Day 7

Your last day with us

This is where your safari in Tanzania will end. We hope that you have had the most fabulous trip and we can't wait to help you plan your next safari.

Activity **Day 7**

- We'll get you to the airport on time with our airport transfer.

Meal Plan - Day 7

- Breakfast

Pricing

Proposal for Socio Safari Kiru

Tour Length

7 Days / 6 Nights

Travelers

2x Adulto

Included

- Accommodation in a double room
- Full board during the safari
- Airport transfers
- Expert Spanish-speaking guide
- 4x4 Safari Jeep with pop-up roof for comfortable wildlife viewing
- Electrical outlets and cooler available
- Tanzania visa
- Drinking water throughout the safari

Excluded

- International flights
- Personal expenses
- Personal travel insurance
- Tips (recommended 10 US\$ per person per day)



KIRU

safari experience

About Us

Kiru Safari Experience

Kiru Safari Experience, we understand that a safari is not just a journey, but an opportunity to leave deep imprints on both the landscape and the heart. 'Nyayo' - the footprints - represent not only the physical marks on the Tanzanian trails, but also the emotional ones, those that linger in the memory.

Our commitment is to create a genuine connection with the essence of Africa, offering adventures that will resonate in your life long after the journey. Each experience is marked by passion, kindness and respect for the animals in their natural habitat, where adrenaline mixes with the serenity of the vast Tanzanian parks. At Kiru Safari Experience, we are dedicated to ensuring that every step of your adventure leaves a lasting impression on your life, allowing you to discover Africa in its purest form.

Contact Us

Address Ward Sokon 1, Arusha, P.o.Box 673
Country Tanzania
Phone +34663120622
Email info@kirusafariexperience.com
Website www.kirusafariexperience.com

“ --- THE PULSE OF AFRICA ---
Your Safari, Your Nyayo.”

Kiru Safari Experience

Follow us on

 [Instagram](#)

Colofon

Copyright Text Kiru Safari Experience & SafariOffice

Copyright Images Ariadne Van Zandbergen, SafariBookings.com, Peter Makhholm, Kiru Safari Experience & SafariOffice

[View](#) copyright per photographer

Mary Kimai from Kiru Safari Experience used the SafariOffice App to create this unique proposal especially for you.